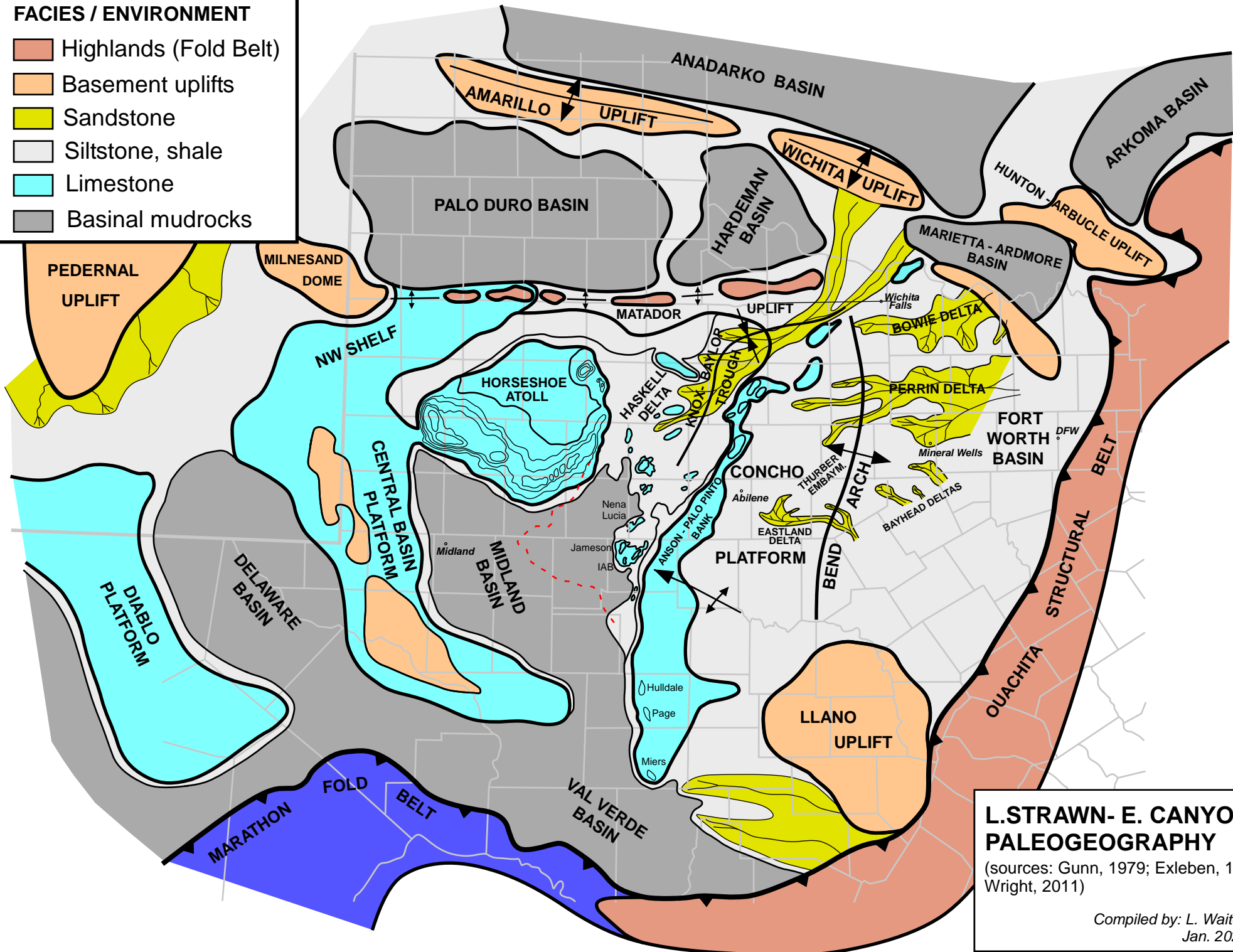


**FACIES / ENVIRONMENT**

- Highlands (Fold Belt)
- Basement uplifts
- Sandstone
- Siltstone, shale
- Limestone
- Basinal mudrocks



**L. STRAWN- E. CANYON  
PALEOGEOGRAPHY**  
 (sources: Gunn, 1979; Exleben, 1985;  
 Wright, 2011)  
 Compiled by: L. Waite  
 Jan. 2020