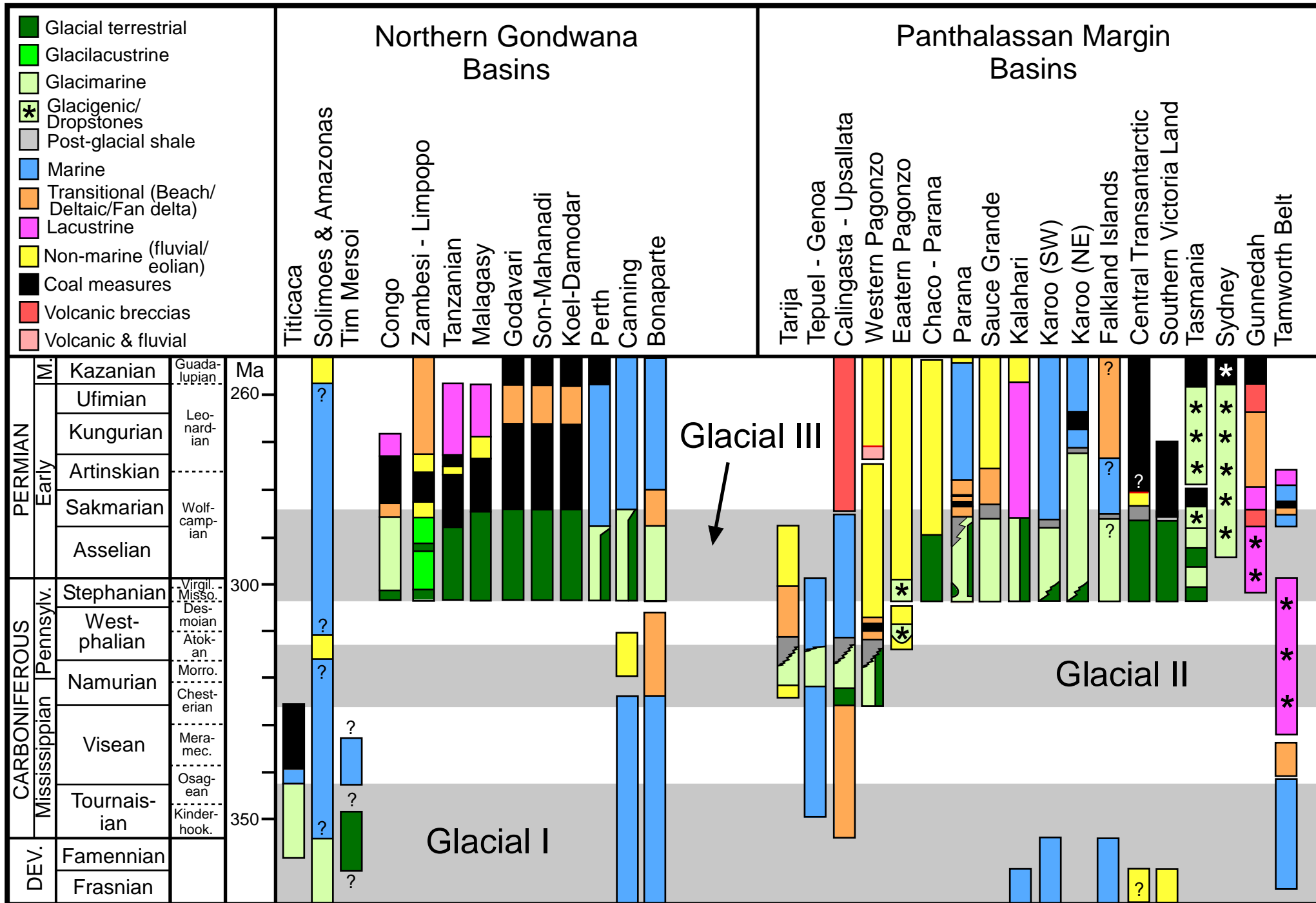


Temporal and spacial distribution of Gondwana glacigenic deposits and associated facies



The Late Paleozoic Ice Age (LPIA) appears to consist of three separate glacial epochs (horizontal grey bars). Estimates of ice volumes suggests that only Glacial Episode III (Late Pennsylvanian - early Permian) had enough volume to drive glacioeustasy and generate sedimentary cyclothems (redrafted and modified from Isbell, et al., 2003, GSA Spec. Paper 370).